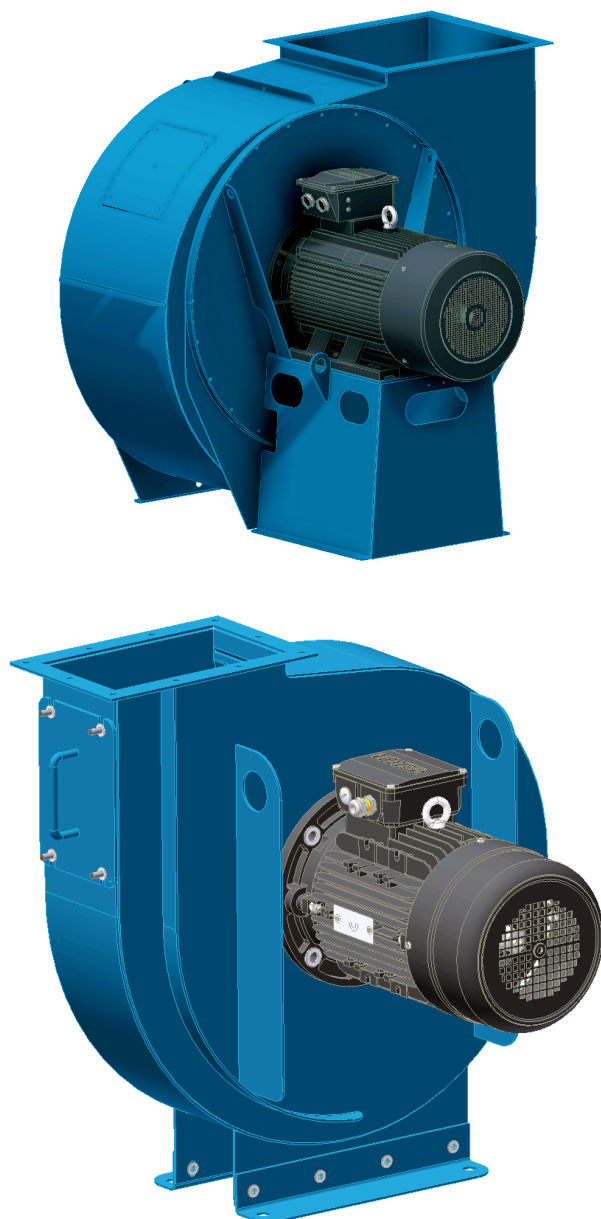


# Combifab F fan

## Direct driven



### Description

Combifab F direct driven fans have been designed to transport of air with a content of dust and material. The volume of material permissible will depend particularly on the fan impeller type but other aspects are also relevant to the area of application of the particular fan.

### Options

- Fans position according to the eurovent
- Atex version (combustible dust or gas)
- Spark inlet
- Extra abrasion resistant impeller
- Scroll wear lining for housing
- Sound box
- Flexible connection
- Vibration absorber
- Extra position for inspection door
- Inlet reducer type and outlet transition type
- Vibration sensor

### Specification

Fan type	Operation temperature	Ambient temperature
Non atex version	min. - 20 °C max. + 80°C	min. - 20 °C max. + 40°C
Atex version	min. - 20 °C max. + 60°C	

Note, that standard motor for **external zone 22** is not for **metal combustible dust**.

Other details are available in documents, which are show below:

**Fanselector**

**Technical guide**